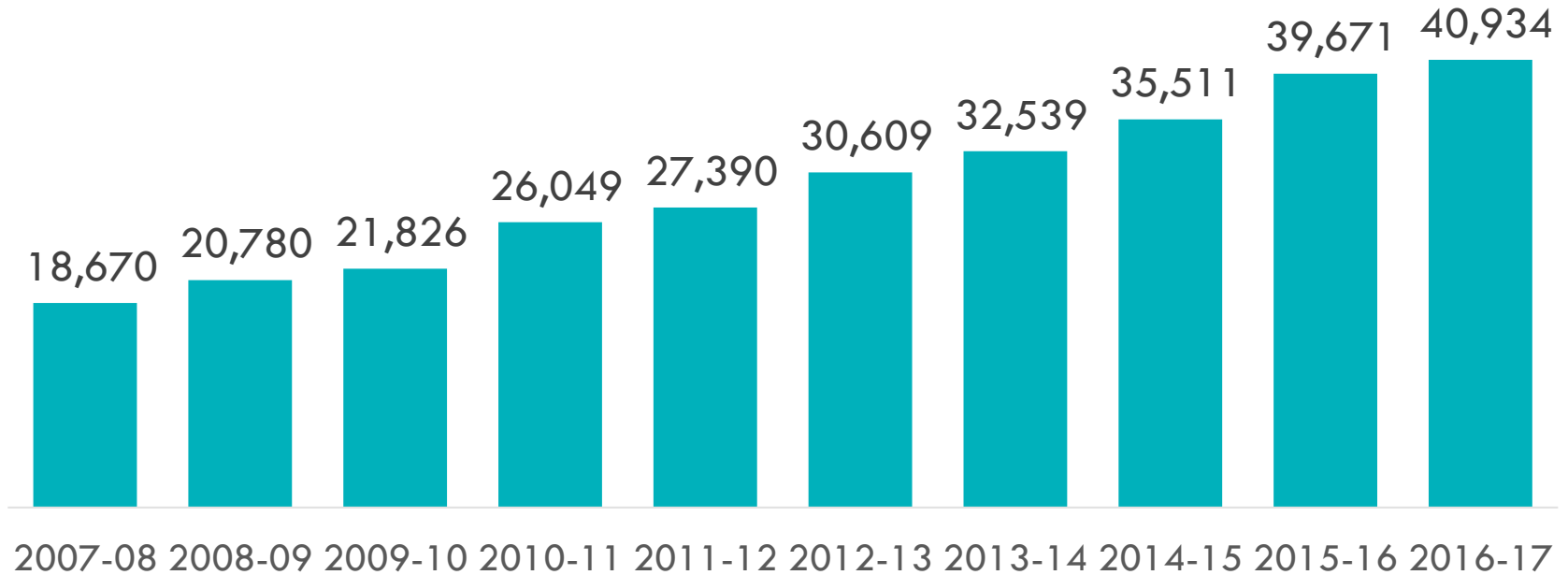


# STUDENT HOMELESSNESS IS GROWING

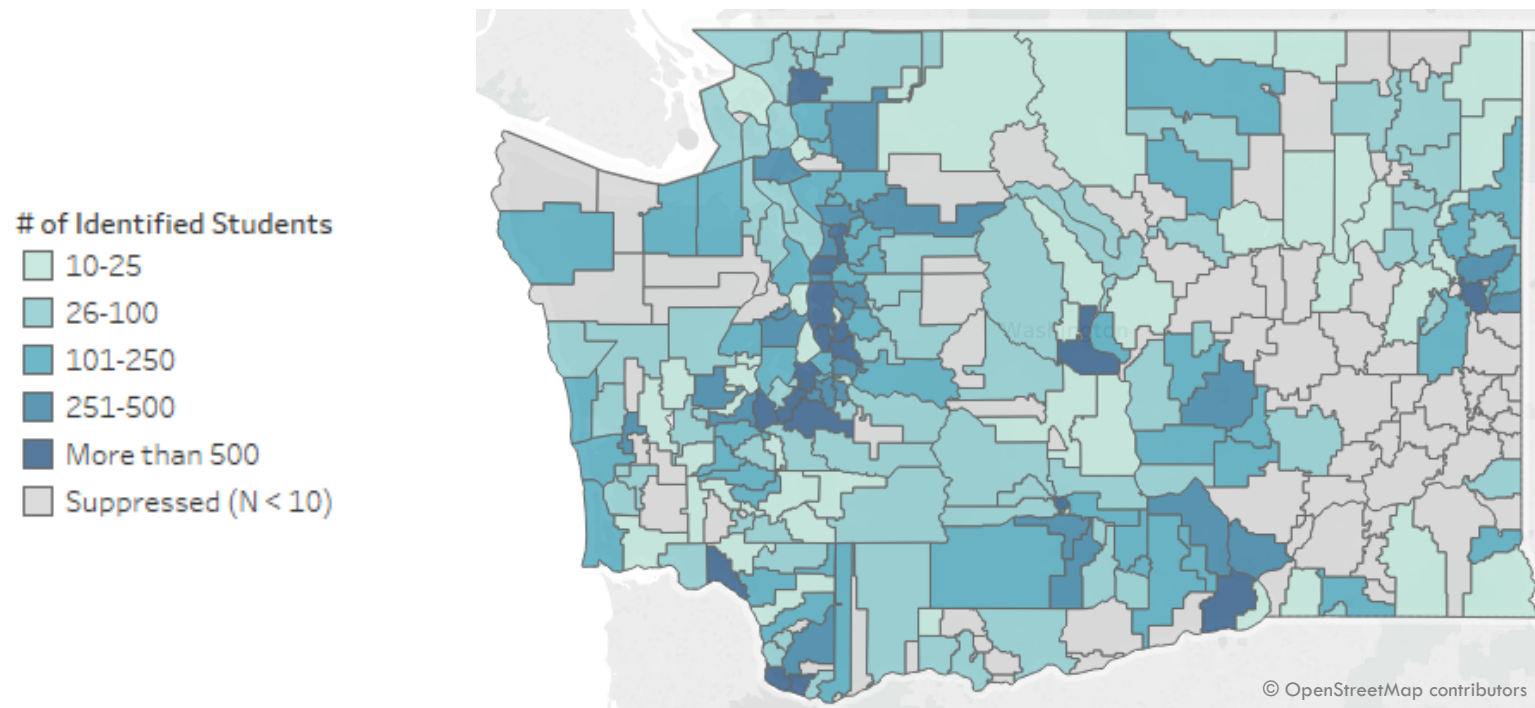
Number of Students Identified as Experiencing Homelessness in Washington State



Source: Office of Superintendent of Public Instruction. <http://www.k12.wa.us/HomelessEd/Data.aspx>

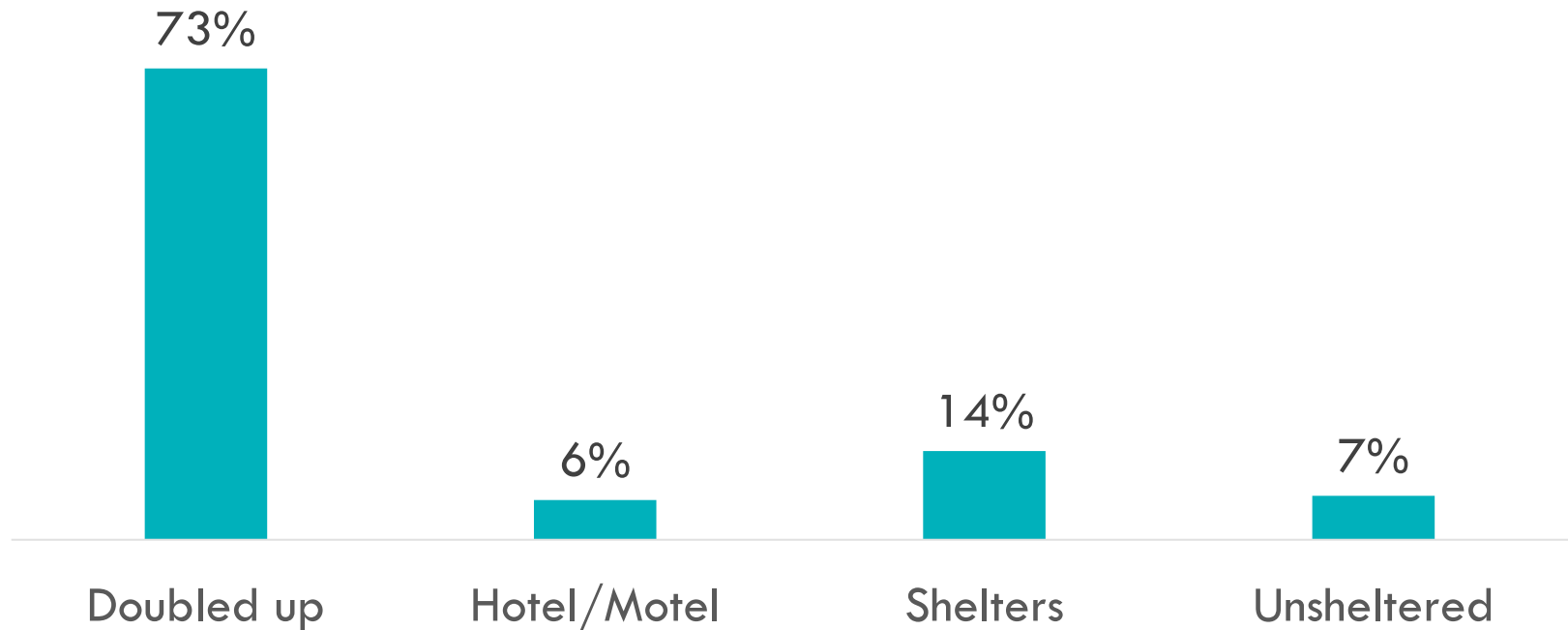
# STUDENTS EXPERIENCE HOMELESSNESS EVERYWHERE IN OUR STATE

Statewide, 40,934 students in K-12 public schools were identified as experiencing homelessness



# WHERE STUDENTS EXPERIENCING HOMELESSNESS SLEEP AT NIGHT

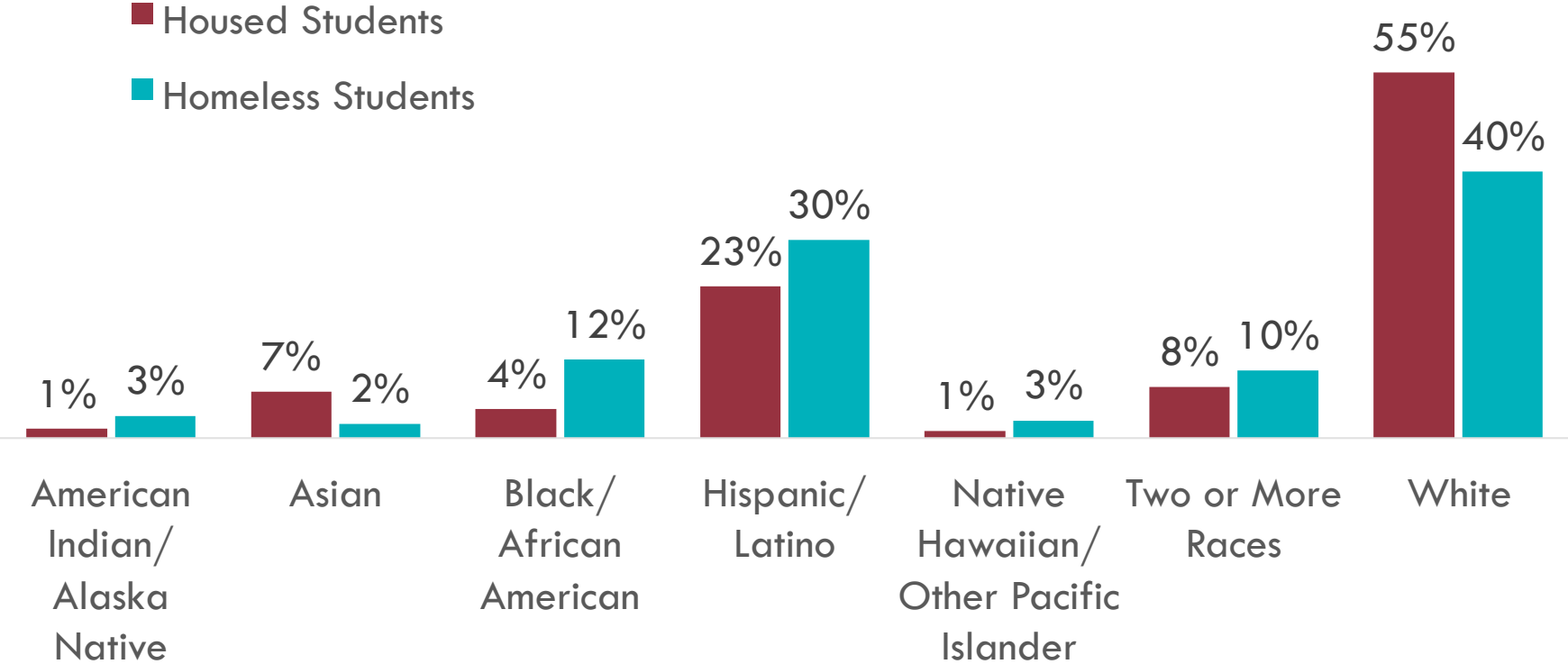
Nighttime Residence of Public School Students Experiencing Homelessness



Analysis of 2016-17 school-level data from OSPI by Building Changes. Student counts are duplicated across schools in some cases and may vary from other reported sources.

# HOMELESSNESS IMPACTS SOME GROUPS MORE THAN OTHERS

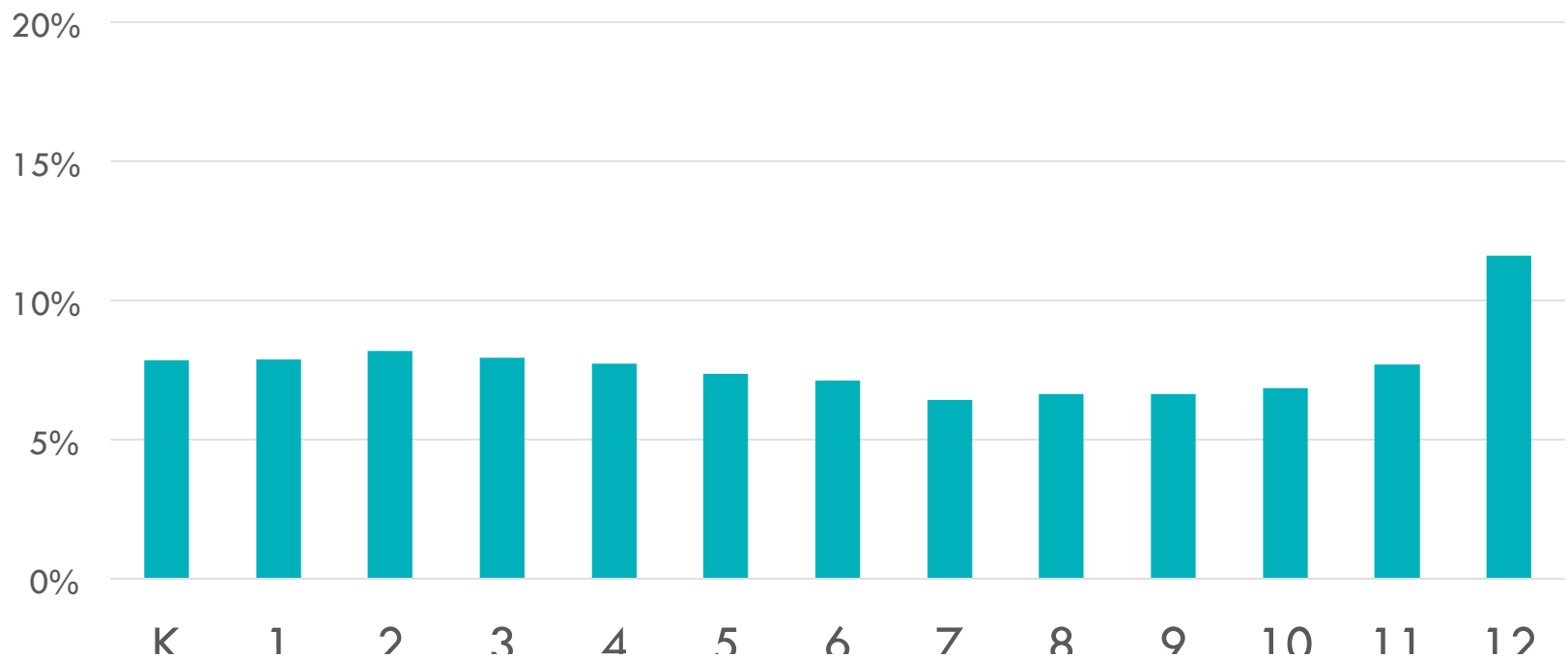
Distribution of Students Experiencing Homelessness by Race/Ethnicity, 2016-17



Analysis of 2016-17 school-level data from OSPI by Building Changes. Student counts are duplicated across schools in some cases and may vary from other reported sources.

# STUDENTS EXPERIENCING HOMELESSNESS ARE IN EVERY GRADE

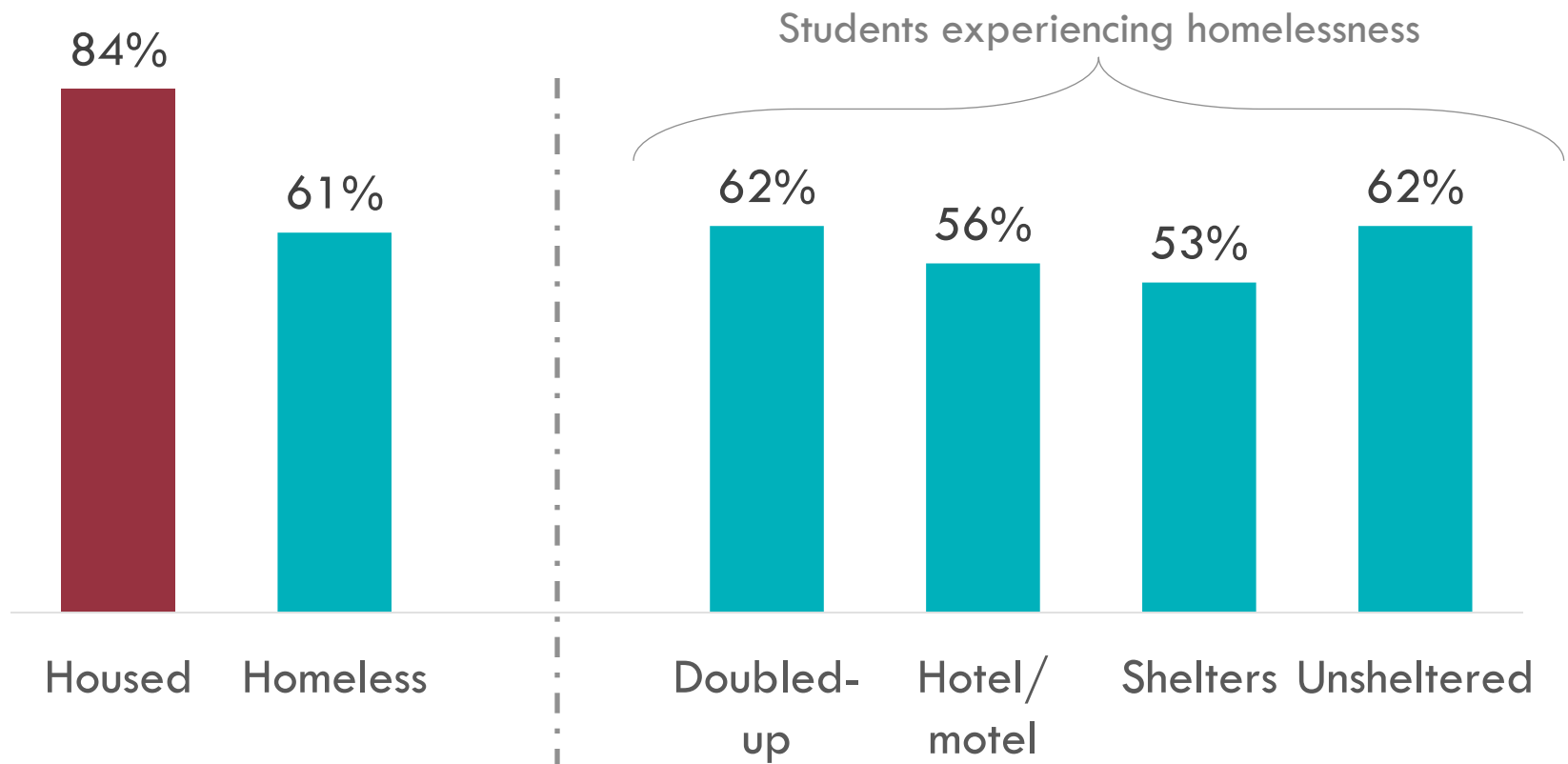
Distribution of Students Experiencing Homelessness, by Grade Level, 2016-17



Analysis of 2016-17 school-level data from OSPI by Building Changes. Student counts are duplicated across schools in some cases and may vary from other reported sources.

# EXPERIENCING HOMELESSNESS IMPACTS EDUCATION - REGARDLESS OF TYPE OF HOMELESSNESS

## 5-Year (Extended) High School Graduation Rate



Analysis of 2016-17 school-level data from OSPI by Building Changes. Student counts are duplicated across schools in some cases and may vary from other reported sources.

PLEASE JOIN US!

[schoolhousewa.org](https://schoolhousewa.org)